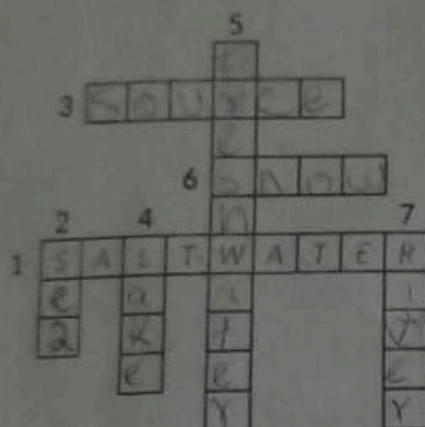


## Lesson 1 » The World Around Us

1. Read the clues to complete the crossword.



1. Water you can't drink because it's salty.

2. Large area of salt water.
3. Place where a river begins.
4. A large body of salt or fresh water surrounded by land.
5. Water that's not salty.
6. Frozen water in the shape of white flakes.
7. Natural flow of water of considerable length that crosses land and ends in the sea or ocean.

2. Read the following text. Underline the facts and circle the opinions.

Have you ever seen a snow-covered mountain? Well, this is quite easy to do in Colombia, but, according to recent studies, many snow-covered mountains will disappear in the next 30 years. The reason is global warming. Glaciers in these mountains are melting because the temperature has risen in the last decades. But, do you know why these mountains are important for us? Besides being beautiful and sacred, snow-covered mountains are water regulators. This is very important for the water cycle. The presence of snow guarantees we have water in our rivers. At the same time, snow reflects sunlight back to the atmosphere reducing warming effects on the planet. Snow-covered mountains are excellent indicators of climate change. If the atmosphere is cool, snow is present. On the contrary, if the atmosphere's temperature rises, snow melts. Some good news, at least for the Sierra Nevada de Santa Marta, came with Hurricane Matthew. The heavy rains and humidity created the perfect conditions to help the Sierra become white again. Let's hope this continues!

3. Answer the questions.

1. What may happen to the snow in the next three decades?

It may disappear

2. What factor has contributed to the loss of snow in these mountains?

3. Why are snow-covered mountains important?

3. Why are snow-covered mountains important?

Population Protection and

4. Has the Sierra Nevada de Santa Marta permanently recovered its snow?

Dead after being decapitated  
The Spine

5. Have you ever seen a snow-covered mountain? Which one?

Have not visited since

# Lesson 2 » Our Natural Resources

1. Complete the table with words from the Word Bank.

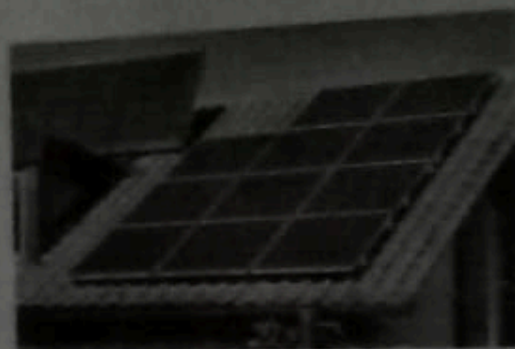
Renewable resources	Non-renewable resources
animals plants wind water sunlight	coal gas petroleum fossil fuels minerals

## Word Bank

animals coal gas  
minerals fossil fuels  
petroleum plants  
sunlight water wind

2. Read the text and answer the questions. Write full sentences.

The planet is being polluted by the overuse of fossil fuels leading to what is called the greenhouse effect. This is causing global warming, so many people believe that we should be using renewable resources more often to help save the planet. Eco-friendly construction is an example of this. These 'green' buildings use renewable resources like wind and sunlight. They have solar panels to heat water and use different construction methods to make good use of the wind and sun. For example, the location of a window can contribute to a more efficient use of solar energy during the day or can take advantage of the wind to cool down the house.



1. Have you visited an eco-friendly construction? Where?

*Have not visited any*

2. Have you seen a solar panel? Where?

*Have not visited any*

3. Does your community use any renewable resources? Which ones?

*use renewable resources plants, wind, sunlight*

4. According to the text, eco-friendly is a synonym of Green.

5. Have you seen examples of fossil fuels polluting the environment? Where? What?

*Have not visited any*



## Lesson 3 » What Are We Doing to Our World?

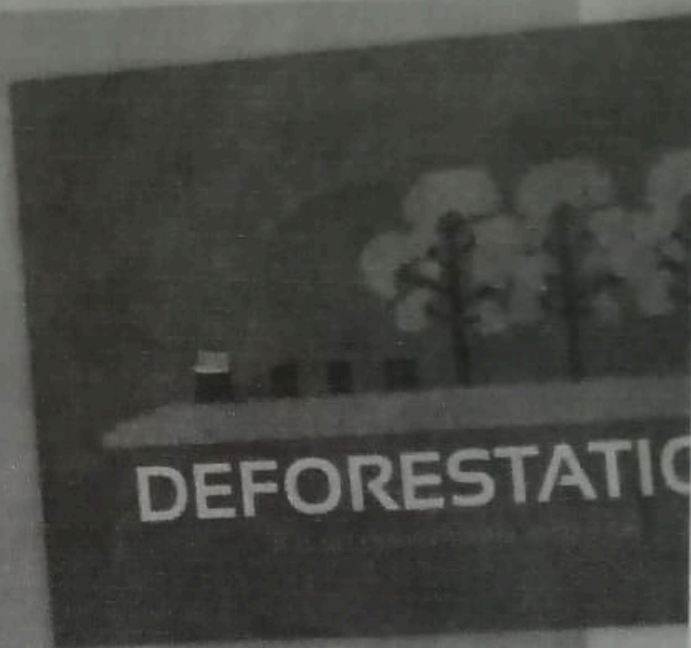
1. Match the environmental problems 1-5 with the definitions A-E.

- 1. erosion B
- 2. water scarcity C
- 3. deforestation E
- 4. global warming D
- 5. pollution A

- A. Introduction of toxic substances into the environment.
- B. Soil loss because of wind and water.
- C. When there is not enough water to cover basic needs in a region.
- D. A rise in the average temperature of the Earth's atmosphere.
- E. The action of systematically cutting down trees to use the land for agriculture.

2. Complete the first part of the text with the correct form of the verbs.

My Department, Guajira, is an environmentally affected region. We <sup>1</sup> have had (have) many problems since the coal mining operations began. For many years now, we <sup>2</sup> suffer (suffer) from a scarcity of water as this is a desert region. However, everything <sup>3</sup> has become (become) worse since the mining industry started to use the rivers for its operations. Besides the water problems, the air is now polluted with tiny particles of coal which <sup>4</sup> make (make) people ill. Deforestation <sup>5</sup> has become (become) another environmental problem. As the coal mine needed to expand its activities, more land was required and to do this, native vegetation <sup>6</sup> was removed (be) removed. Of course, this <sup>7</sup> contributes (contribute) to the water and soil erosion problem. In addition, the Department of Guajira is very windy, so this causes more soil erosion, especially on the coast.



3. Read the second part of the text. Choose the correct option to give advice.

For these reasons, we are asking the President of the Republic to help us in several ways. First, the coal mine <sup>1</sup> shouldn't / should interfere with the rivers. Second, the mining company <sup>2</sup> must / can put a stop to deforestation. Third, the mine <sup>3</sup> mustn't / must continue polluting the air and water, so they <sup>4</sup> mustn't / must follow the correct environmental procedures. And finally, the Government <sup>5</sup> should / can have a plan for extreme climate conditions.



# Check Your Progress

Choose the correct option.

- Frozen water in the form of white flakes is called \_\_\_\_\_.  
a. salt water      c. ice  
b. fresh water      d. snow
- A place where a river starts: \_\_\_\_\_.  
a. ocean      c. source  
b. sea      d. mountain
- A body of water surrounded by land is called a/an \_\_\_\_\_.  
a. lake      b. ocean      c. sea      d. river
- Water which you can drink.  
a. salt water      b. fresh water
- Which one is NOT a renewable resource:  
a. sunlight      b. coal      c. wind      d. water
- Which one is NOT a non-renewable resource:  
a. petrol      b. gas      c. coal      d. wind
- Governments of the world \_\_\_\_ put a stop to pollution now.  
a. must      c. will  
b. can't      d. shouldn't
- We \_\_\_\_ conserve water in many ways at our homes.  
a. must      c. can't  
b. may      d. shouldn't
- Have you \_\_\_\_ a snow-covered mountain  
a. see      b. seen      c. saw      d. seeing
- \_\_\_\_ the world climate changed in the last decades?  
a. Have      b. Has      c. Does      d. Did

		Very well	Quite well	With difficulty
<b>Vocabulary</b>	I can identify vocabulary related to natural resources like water and its uses.		✓	
<b>Grammar</b>	I can use modals to give advice. I can use have + participle to talk about everyday activities.		✓	
<b>Reading</b>	I can understand short texts about natural resources.			✓
<b>Writing</b>	I can write short paragraphs about natural resources. I can write some advice.	✓		
<b>Listening</b>	I can identify information in short conversations about natural resources.			✓
<b>Speaking</b>	I can give advice about the proper use of natural resources.		✓	✓