

# Lesson 2

**1** Get with a partner and talk about these questions.

- How many continents are there?
- How many planets are there in our solar system?
- Which is the most crowded country in the world?



**2** Now listen to the following texts and check your answers.

## PLANETS

There are nine planets in our Solar System: Mercury, Venus, Earth, Mars, Jupiter, Saturn, Uranus, Neptune and Pluto.

Jupiter is the largest planet. The sun is the closest star to the Earth. Pluto is the smallest and the coldest.

## COUNTRIES

There are five important populated countries in the world: China is the most populated; it has 1,255.698 inhabitants. India is the second most populated country with 982.223 then the USA, Indonesia and Brazil.



## CONTINENTS

There are seven continents: Asia, Africa, America, Antarctica, Arctic, Europe and Australia. Asia is the largest and most populated of all and Africa is the second.



## MAKING COMPARISONS

### COMPARATIVES

**Add -er to short adjectives**

Peter                      Andrew  
Peter is tall.              Andrew is **taller** than Peter.

**Add "more" before long adjectives**

Cindy                      Kathy  
Cindy is beautiful.      Kathy is **more** beautiful than Cindy.

### SUPERLATIVES

**Add -est to short adjectives**

Peter                      Andrew                      Sebastian  
Sebastian is the **tallest** in the class.

**Add "the most" to long adjectives**

Cindy                      Kathy                      Betty  
Betty is **the most** beautiful girl in the class.

This rule is applied to the adjectives with one syllable:  
tall - short - nice - close - high - big - small - easy - cold  
- new - hot - old - quiet.

Use this rule with adjectives of two syllables that end in -y:  
noisy - happy - heavy - easy.

*You can add more adjectives to this list*

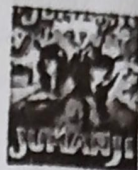
This rule is applied to adjectives with two or more syllables:

Interesting - beautiful - popular - boring - difficult -  
crowded - dangerous - exciting - expensive - modern  
- wonderful - important.



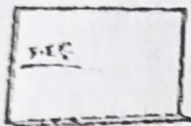
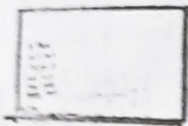
3 Look at the pictures and write comparisons. Use the chart from the previous page. Follow the example:

Star Wars / interesting / Jumanji



"Star Wars" is more interesting than "Jumanji."

a. English / difficult / mathematics



English is more difficult than mathematics.

b. Antarctica / cold / America



Antarctica is colder than America.

c. Asia / large / Africa.



Asia is bigger than Africa.

d. Cindy Crawford / beautiful / Naomi Campbell



Cindy Crawford is more beautiful than Naomi Campbell.

e. Tokyo / large / New York



Tokyo is bigger than New York.

f. You / tall / your best friend



You are taller than your best friend.

3 Complete the following sentences using superlative adjectives. Follow the example.

#### IRREGULAR COMPARATIVES

Adjective	Comparative	Superlative
good	better	best
bad	worse	worst
far	farther	farthest

Pluto is the smallest (small) planet in the universe.

a. My sister is the youngest (young) in the family.

b. Caracol is the most (popular) TV program in my country.

c. Naya Evans is the most (beautiful) actress in the world.

d. The Concord is faster (fast) passenger airplane.

e. The Nile is longer (long) river in the world.

f. Pluto is colder (cold) planet.

g. The liver is the most larger (large) organ in the human body.

h. Mount Everest is the highest (high) mountain.

i. Ronaldo is the good (good) soccer player in my country.

j. Nacional is the bad (bad) soccer team in my country.

k. Australia is smaller (small) continent.



3 Work in pairs and try to answer the quiz. Take turns asking the questions.

# General Knowledge Quiz!



1. Which is the biggest planet?  
**a.** Jupiter                      b. Saturn                      c. Pluto

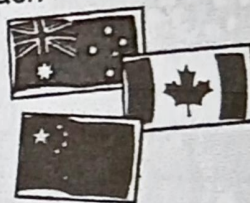


2. Which is the oldest?  
**a.** The Statue of Liberty   b. The Eiffel Tower   c. Sears Tower



3. Which is the bigger of the three?  
 a. the heart                      b. the liver                      **c.** the stomach

4. Which country has the largest population?  
**a.** China                      b. Canada                      c. Australia



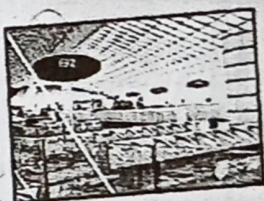
5. Which one of these planets is warmer than Earth?  
 a. Mercury                      b. Saturn                      **c.** Venus

6. Which continent has the world's largest desert?  
 a. Europe                      **b.** Africa                      c. Asia



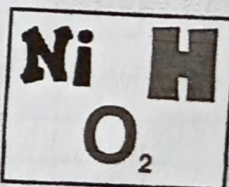
7. Which continent has the largest number of people?  
 a. Europe                      b. Africa                      **c.** Asia

8. Which planet's orbit is closer to the Earth?  
 a. Pluto                      **b.** Mars                      c. Venus



9. What is the name of the busiest airport in the world?  
**a.** John F. Kennedy                      b. Heathrow                      c. Charles de Gaulle

10. Which is the lightest gas of the three?  
 a. nitrogen                      b. hydrogen                      **c.** oxygen



11. Which is denser?  
 a. fresh water                      **b.** salt water

12. Which country is the closest to the Tropic of Capricorn?  
 a. Argentina                      **b.** Venezuela                      c. Ecuador



13. Which is the biggest animal?  
**a.** the elephant                      b. the blue whale                      c. the shark

